

RETRACTABLE BOLLARD: 90MM GALVANISED



The Supamaxx™ range of retractable bollards are designed to be used as a medium security option where traffic and parking control are needed. The inground casing and internal locking mechanism makes the Supamaxx Retractable Bollard an easy to use product and with the choice of 2 diameters in this range, 90mm and 165mm, there is an option to cater for your specific needs.

- 100% Made in Australia and 'Not a Cheap Import'
- Hot Dip Galvanised for superior protection against corrosion
- Internal locking mechanism can't be tampered with
- Quality & Reliability that puts Supamaxx ahead of all competition

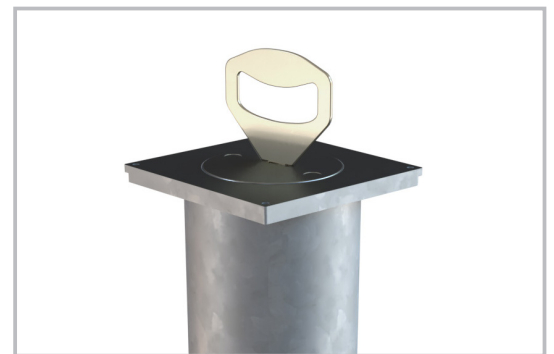
PRODUCT CODE	CBG90MR
WALL THICKNESS	3.5mm
BOLLARD DIAMETER	90mm
ABOVE GROUND	900mm
BELOW GROUND	1150mm
INGROUND CASING DIAMETER	140mm
MATERIAL	Mild Steel Pipe
FINISH	Hot Dipped Galvanised



The superior Supamaxx manufacturing process of all Galvanised bollards receives a premium Hot Dip Galvanised Treatment to ensure maximum protection and wear for the life of the bollard.

All Supamaxx Fixed bollards can be cast into concrete or retro fitted into an existing concrete slab. We offer a complete installation service, Australia wide, or can assist you with advice on installation techniques for our product range.

We recommend you always obtain tailored advice from one of our professional staff to ensure you purchase the most suitable product for your specific needs.



FEATURES:

- Black grip (anti-slip) surface
- Handle key for retracting

ACCESSORIES FOR RETRACTABLE BOLLARDS

WARNING

BOLLARD MUST BE LOWERED MANUALLY INTO THE GROUND. NEVER ALLOW IT TO FREE FALL. TO DO SO WILL CAUSE DAMAGE TO THE BOLLARD AND VOID WARRANTY.

Note: The design of this retractable bollard is made to be used in access control areas and should not be used where high security is required. If you need a high security option please see our key lock bollards.

Check out our other HVM products at supamaxx.com.au

1300 225 521 | supamaxx.com.au

© SUPAMAXX 2019